

closomat®

Product range

Technical data & service requirements



www.closomat.co.uk

DEDICATED CUSTOMER SUPPORT SERVICE & MAINTENANCE

Every Closomat is thoroughly tested by our factory in Manchester prior to dispatch and is ready to be used by the client as soon as it has been installed and switched on. As part of our commitment to delivering the ultimate in intimate care, we prefer to “commission” every unit.



0800 374 076

Asana technical data

The Closomat toilet **MUST** be installed by a competent or qualified person.

Explanation of symbols

- Safety instructions in this manual are identified by symbols. The safety instructions are introduced by signal words, which express the extent of the hazard/risk.
- In order to prevent accidents, personal injury, property damage and guarantee maximum user safety, follow the safety instructions without fail and exercise caution.

Description of equipment

- The Closomat toilet is an electrically operated wash & dry (shower) toilet designed to provide the operator/user with a hygienic solution to toileting.

Start-up procedure

- To enable a warm washing cycle operation the Closomat toilet must be switched on. Each Closomat toilet has its own isolation switch. To switch the unit on, locate the switch behind the filter drawer.
- Once switched on, a short initialisation programme runs during which the Closomat must not be used. It is advised that to maintain the core temperature in readiness for use, the unit be left switched on at all times.

Electrical services

- To avoid the risk of electric shock, this equipment **MUST** only be connected to a supply mains with protective earthing by a competent or qualified person.

Mains isolation

- All electrical appliances must be installed in accordance to the relevant regulations associated with the country it is within. To conduct any form of repairs or servicing it is recommended that a mains isolation device be located in the vicinity of the unit.
- 230V single phase AC supply is required, (loading, 4.5A, maximum power 1100 watts). The Closomat toilet is supplied with a 3 core cable attached and **MUST NOT** be removed or replaced. A 10A fused spur is required for isolation.
- Spur outlet to be located in accordance with current I.E.E. Regulations (Current Edition).
- No modification of this unit is allowed other than by the manufacturer.
- **Closomat has IPX4 rating.**

Shutdown procedure

- For normal isolation, the Closomat toilet can be turned off using the integrated switch. To carry out any servicing, the unit **MUST** be isolated at the mains feed.

Bathroom/shower room installations

- The Closomat toilet must not be in direct line with the shower spray. Some form of partition between shower and the Closomat toilet is advisable to prevent any water spraying directly onto the equipment.
- A shower should not be used in conjunction with the Closomat toilet i.e. under no circumstances must a user shower whilst seated on the Closomat toilet.

Water services (WRAS approved)

- **It is essential that the entering water is cold.**
- We would recommend water supply isolated via isolation valve.
- Water supply can be from storage vessel or mains ('Grey Water' **MUST NOT BE USED**).
- Boiler Capacity: 1.4 litres.
- Incoming water supply: min. 7 litres/min.
max. 0.8 MPa (8 bar)
- Cistern capacity: 6 litres.

Overflow

- The Closomat toilet has an internal overflow which discharges into the W.C. pan through the flush valve.

Soil connection

- Relevant soil connector to be sourced by installer.

Safe working load: 190kg/30st.

Overall dimensions:

425mm high x 425mm wide x 590mm deep

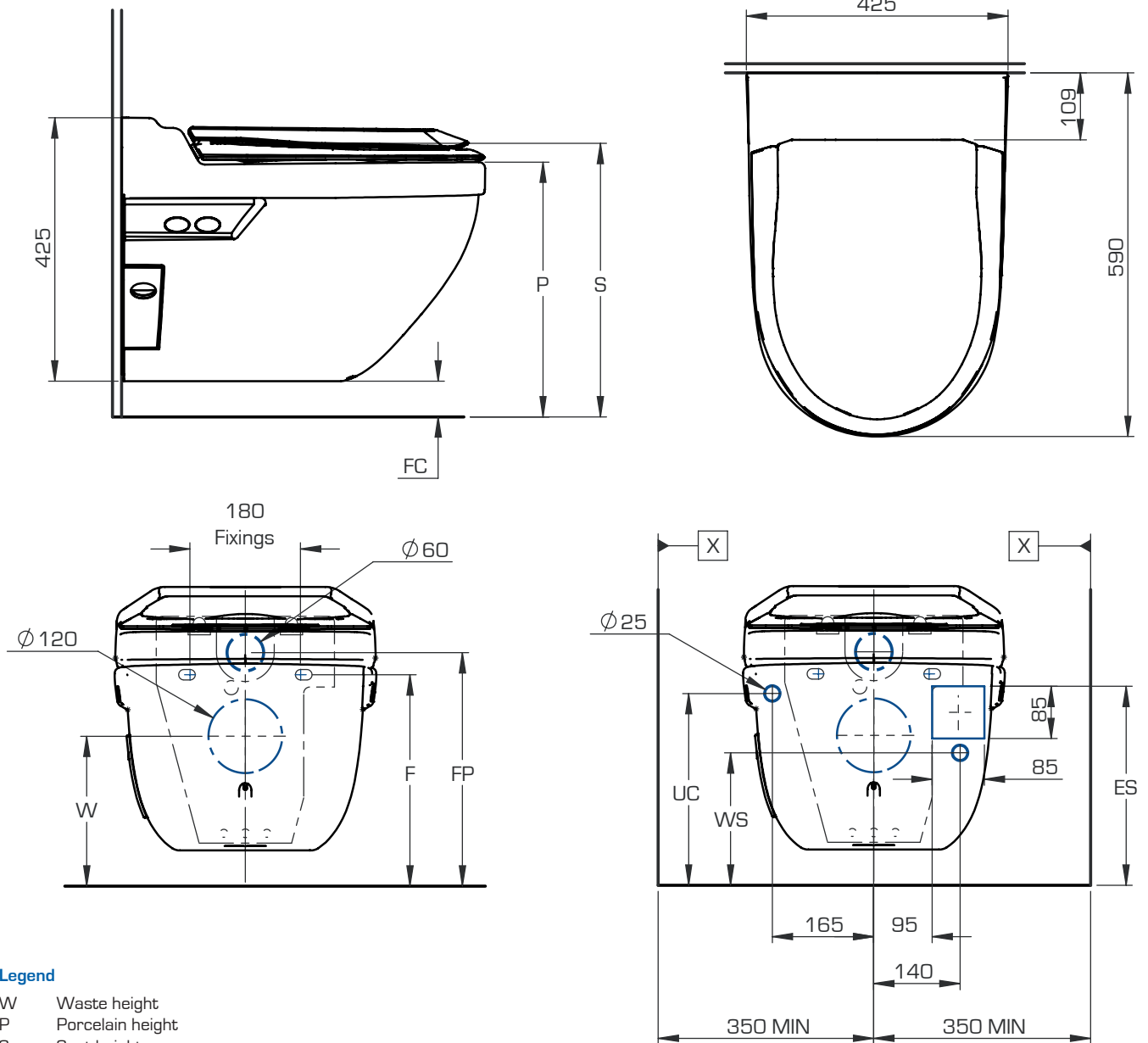
Asana

Planning Data and Service Requirements

Services & WC Unit



Check that the power circuit has been fitted with a Residual Current protective Device (RCD)!
The appliance should only be connected to a socket protected by an RCD!



Legend

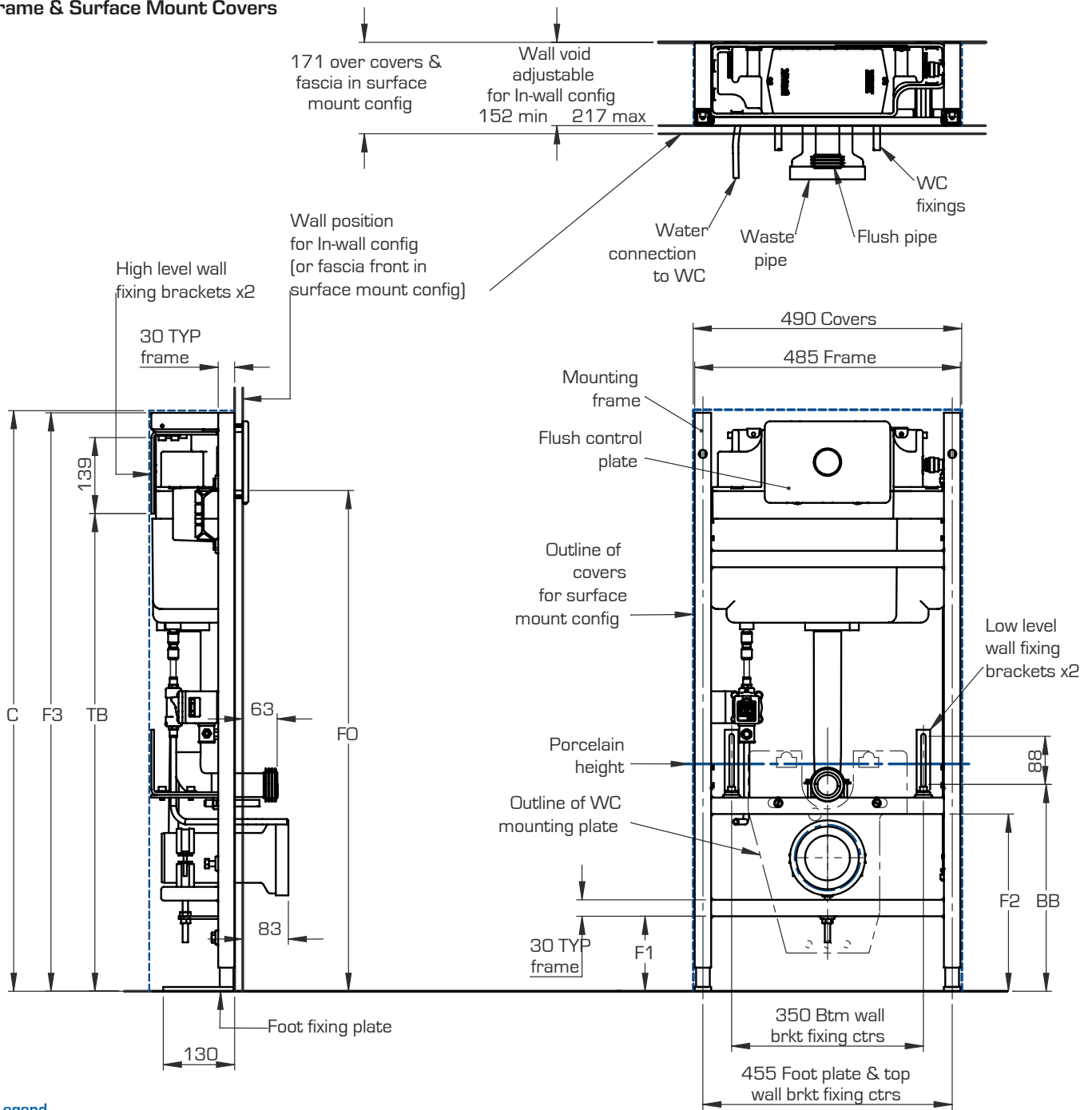
- W Waste height
- P Porcelain height
- S Seat height
- FC Floor clearance
- F Fixing height for mounting plate
- FP Flush pipe height
- WS Water service
- ES Electrical service (to TOP of standard face plate) Electrical connection to be in compliance with current regulations part P.
- UC Unit connections
- X Recommended min. distance to obstacle

DIMENSION	W	P	S	FC	F	FP	WS	ES	UC
FORMULA	S-200	W+170	P+30	P-355	W+100	W+134	W-28	W+38	W+68
STANDARD	240	410	440	55	340	374	212	278	308
HEIGHT 1	265	435	465	80	365	399	238	303	473
HEIGHT 2	290	460	490	105	390	424	263	328	498
HEIGHT 3	315	485	515	130	415	449	288	353	523
HEIGHT 4	340	510	540	155	440	474	313	378	548
HEIGHT 0*	205	375	405	20	305	339	177	243	273

*Height 0 = very lowest available positioning in special circumstances only!

Asana

Frame & Surface Mount Covers



Legend

- F1 Frame cross member height
- F2 Frame cross member height
- F3 Frame total height
- BB Bottom wall bracket heights
- TB Top wall bracket heights
- FO Flush control plate opening height
- C Cover total height

DIMENSION	F1	F2	F3	BB	TB	FO	C
FORMULA						P+503	F3+4
STANDARD	137	323	1056	377	872	913	1060
HEIGHT 1	162	348	1081	402	897	938	1085
HEIGHT 2	187	373	1106	427	922	963	1110
HEIGHT 3	212	398	1131	452	947	988	1135
HEIGHT 4	237	423	1156	477	972	1013	1160

HEIGHT 0*	102	288	1021	342	837	878	1025
-----------	-----	-----	------	-----	-----	-----	------

*Height 0 = very lowest available positioning in special circumstances only!

Vita Range technical data

The Closomat toilet **MUST** be installed by a competent or qualified person.

Explanation of symbols

- Safety instructions in this manual are identified by symbols. The safety instructions are introduced by signal words, which express the extent of the hazard/risk.

	IEC 60417-5840 TYPE B APPLIED PART		IEC 60878 Safety 01 ^b Follow operating instructions
---	--	---	---

- In order to prevent accidents, personal injury, property damage and guarantee maximum user safety, follow the safety instructions without fail and exercise caution.

Description of equipment

- The Closomat toilet is an electrically operated wash & dry (shower) toilet designed to provide the operator/user with a hygienic solution to toileting.

Start-up procedure

- To enable a warm washing cycle operation the Closomat toilet must be switched on. Each Closomat toilet has its own isolation switch. To switch the unit on, locate the switch on the right hand side of the unit at the base of the cistern cover, through a Perspex screen.
- Once switched on, the water will reach core temperature within 5 minutes. It is advised that to maintain the core temperature in readiness for use, the unit be left switched on at all times.

Electrical services

- To avoid the risk of electric shock, this equipment **MUST** only be connected to a supply mains with protective earthing by a competent or qualified person.

Mains isolation

- All electrical appliances must be installed in accordance to the relevant regulations associated with the country it is within. To conduct any form of repairs or servicing it is recommended that a mains isolation device be located in the vicinity of the unit.
- 220-240V single phase AC supply is required, (loading, 4.5A-4.9A, maximum power 1300 watts). The Closomat toilet is supplied with a 3 core cable attached and **MUST NOT** be removed or replaced. A 10A fused spur is required for isolation.
- Spur outlet to be located in accordance with current I.E.E. Regulations (Current Edition).
- No modification of this unit is allowed other than by the manufacturer.
- **Closomat has IPX4 rating.**

Shutdown procedure

- For normal isolation, the Closomat toilet can be turned off using the integrated switch. To carry out any servicing, the unit **MUST** be isolated at the mains feed.

Bathroom/shower room installations

- The Closomat toilet must not be in direct line with the shower spray. Some form of partition between shower and the Closomat toilet is advisable to prevent any water spraying directly onto the equipment.
- A shower should not be used in conjunction with the Closomat toilet i.e. under no circumstances must a user shower whilst seated on the Closomat toilet.

Water services (WRAS approved)

- **It is essential that the entering water is cold.**
- We would recommend water supply isolated via isolation valve.
- Water supply can be from storage vessel or mains ('Grey Water' **MUST NOT BE USED**).
- Boiler Capacity: 1.7 litres.
- Water rate: min. 8 litres/min.
max. 0.8 MPa (8 bar)
- Cistern capacity: 6 litres.

Overflow

- The Closomat toilet has an internal overflow which discharges into the W.C. pan through the flush valve.

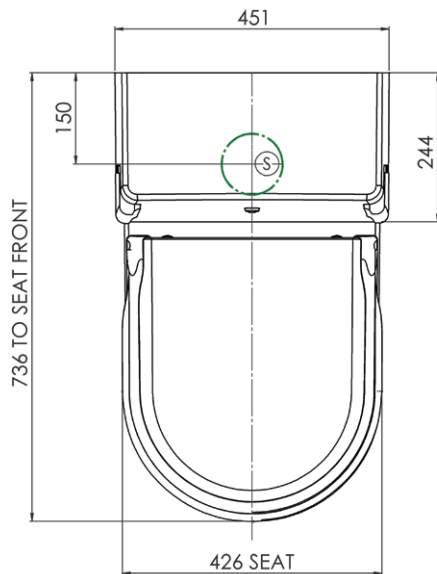
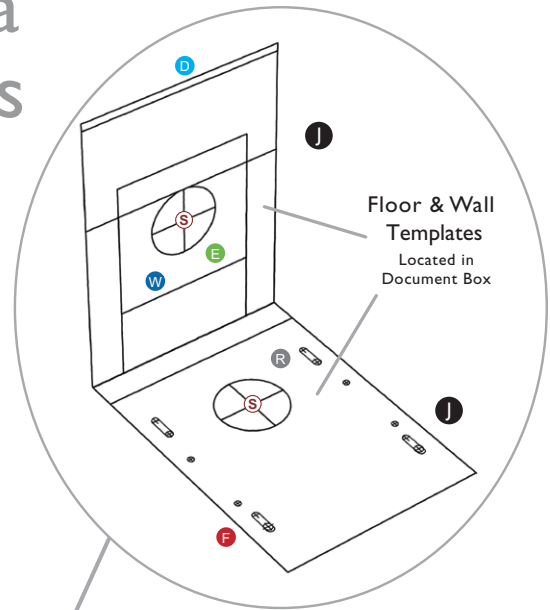
Soil connection

- Relevant soil connector to be sourced by installer.
- Soil connections suitable for Closomat toilet; S-Trap (vertical fall) wall to centre of pipe from 70mm-230mm max. P-Trap (horizontal) floor to centre of pipe 200mm max.
- The Closomat toilet is suitable for all turned trap outlets, through purpose made removable side covers on lower level.

Palma Vita planning data and service requirements

Key / Installation guide:

1. Determine unit height as standard or with optional points (P)
2. Locate floor & wall template jig to plan positions (J)
3. Locate waste pipe / soil position (S)
4. Locate cold water supply (W)
5. Locate electrical supply (E)
6. Use floor template jig for fixing frame (J)



W Water services

Supplied with 15mm Stainless steel braided outer, EDM inner WRAS approved flexible hose completed with integral isolation valve. (Please refer to page 6, water services prior to installation)

D Rear wall fixing

Position 25mm to RH of the centreline. 810mm from the floor.

R Rear floor fixing (2No)

(Standard Installations)
Position on the floor 102mm from the rear wall. 119.5mm to each side of the centreline.

E Electrical services

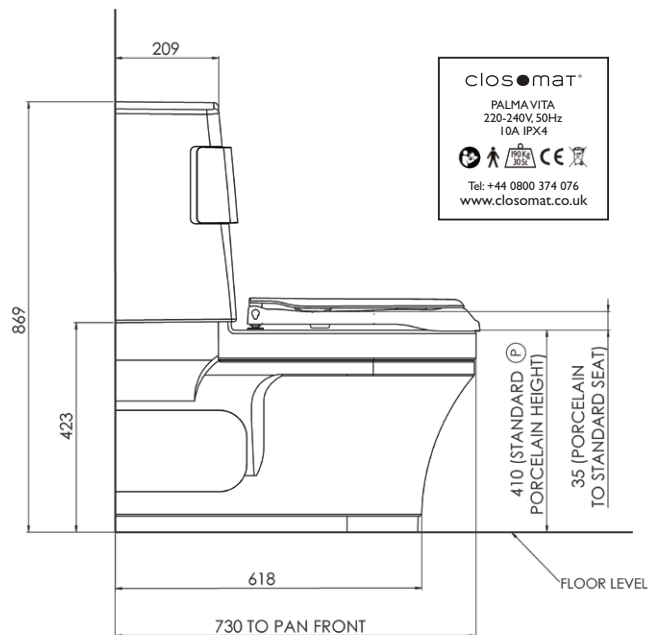
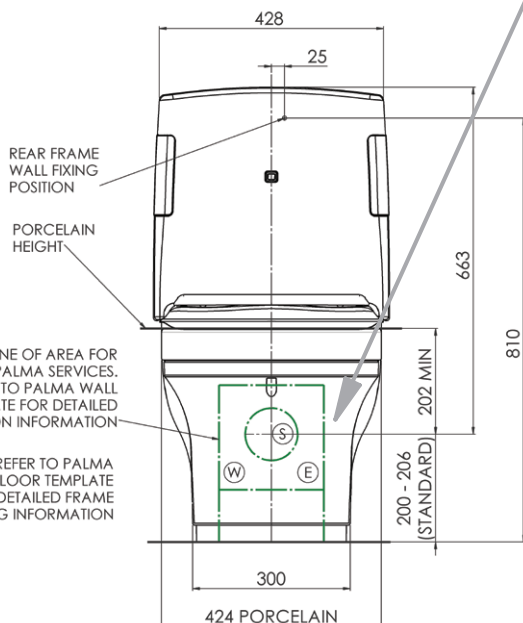
Supplied with 1000mm long, three core (live/neutral/earth) insulated 3183Y-1-white control flex-cable, rated to 220V/240V, 10 amps. (Please refer to page 6, electrical services prior to installation)

F Front floor fixing (2No)

(When using Support Arms)
Position on the floor 327mm from the rear wall. 119.5mm to each side of the centreline.

S Waste details

Pan has a horizontal spigot standard 100mm diameter outlet, suitable for standard pan connection fittings.

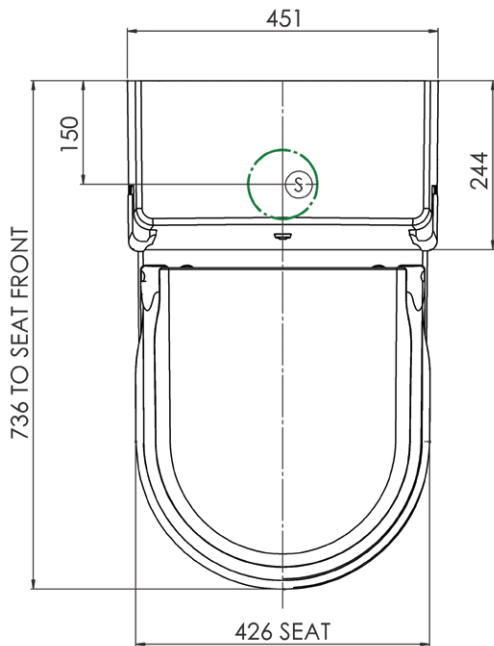


- Safe working load: 190kg/30st
- Overall dimensions: 869mm high x 451mm wide x 730mm deep

Lima Vita planning data and service requirements

Wall Template

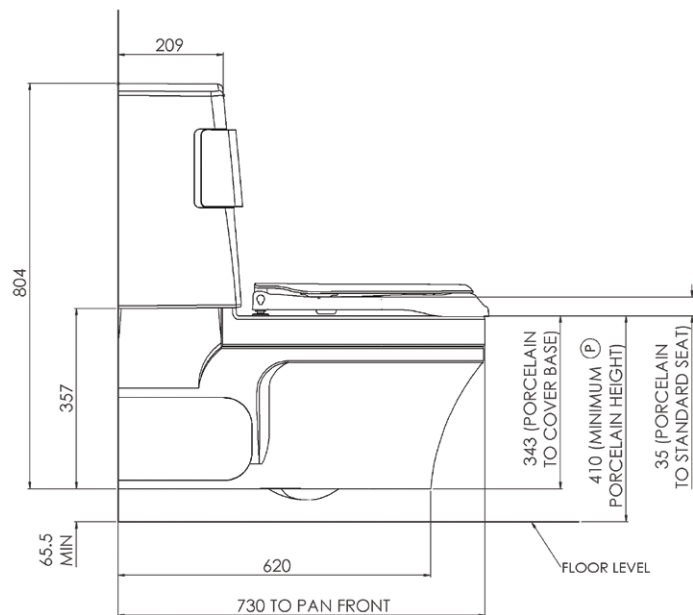
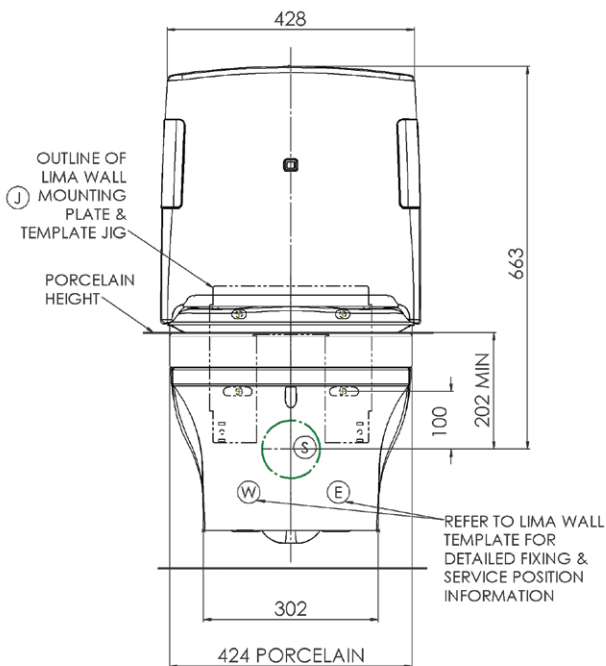
Located in Document Box



Key / Installation guide:

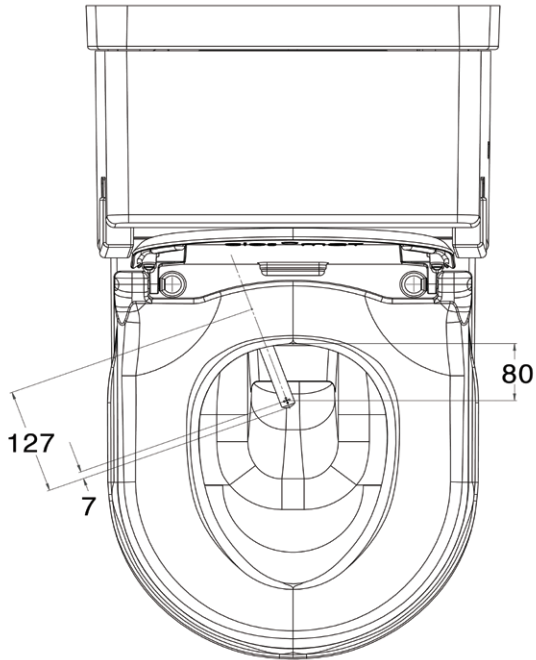
1. Determine porcelain height - Minimum (P)
2. Locate wall template jig for mounting plate (J)
3. Locate waste pipe / soil position (S)
4. Locate cold water supply (W)
5. Locate electrical supply (E)

- Safe working load: 190kg/30st
- Overall dimensions:
804mm high x 451mm wide x 730mm deep

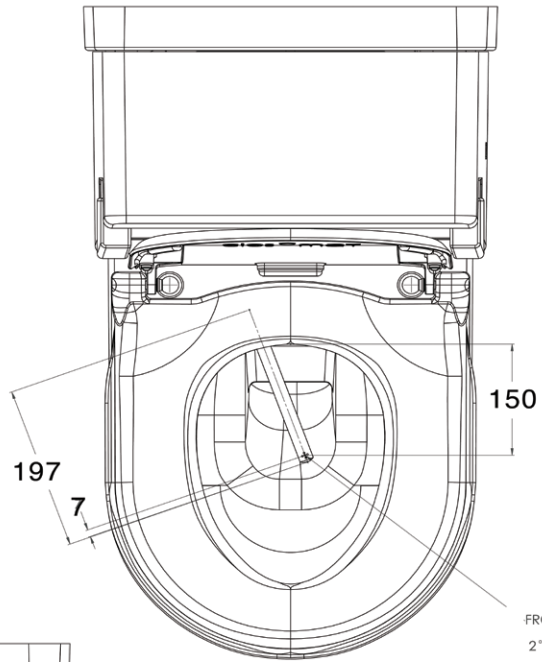


Wash & dry douche options

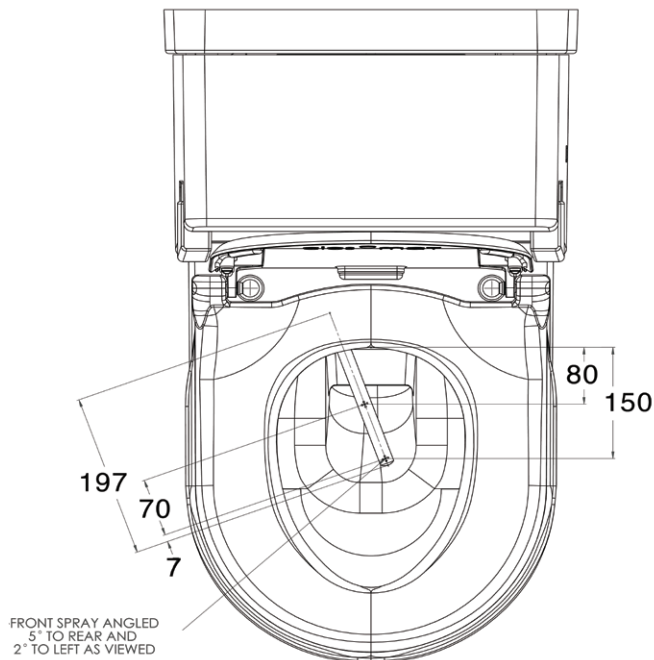
Closomat douche showing 3 positions



STANDARD DOUCHE OPTION
PLAN ON UNIT
DIMENSIONS APPROXIMATE

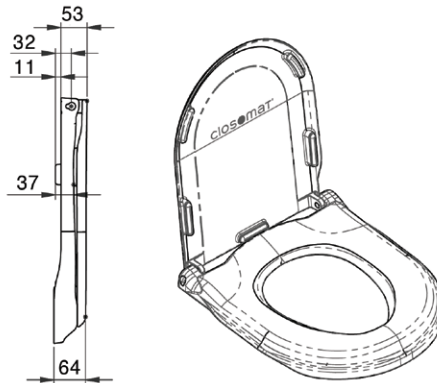
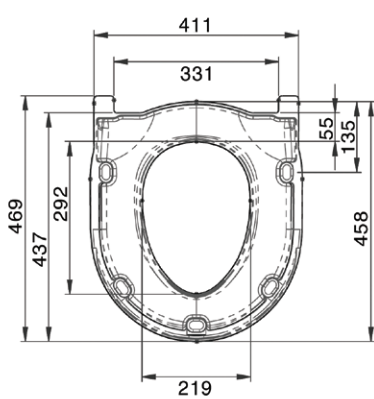


SINGLE EXTENDED DOUCHE OPTION
PLAN ON UNIT
DIMENSIONS APPROXIMATE



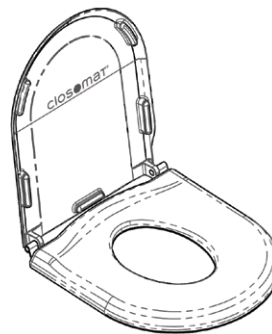
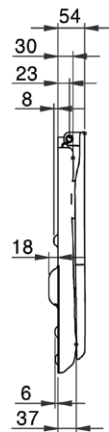
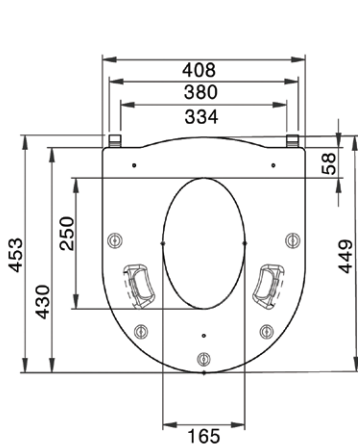
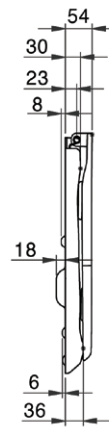
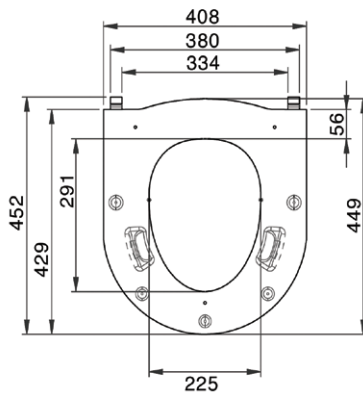
DOUBLE EXTENDED DOUCHE OPTION
PLAN ON UNIT
DIMENSIONS APPROXIMATE

Wash & dry toilet seat options



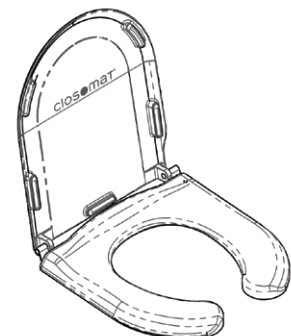
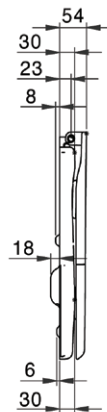
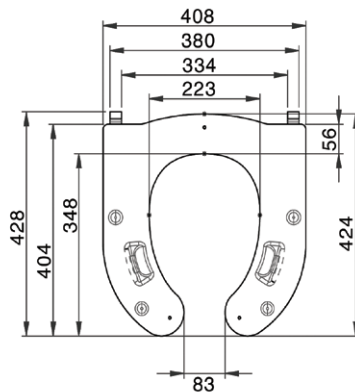
Standard Hard
Palma Seat (White)
Side & 3D views shown
with lid (White)

Soft Adult
Palma Seat (Blue)
Side & 3D views shown
with lid (White)

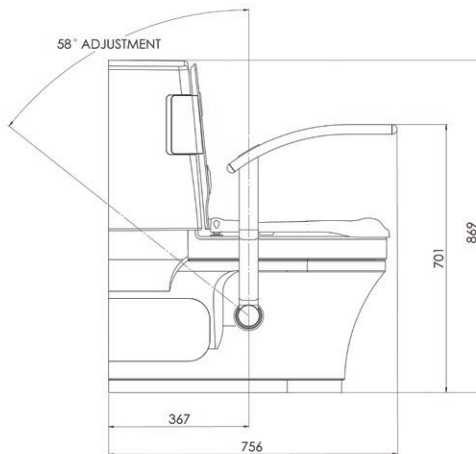
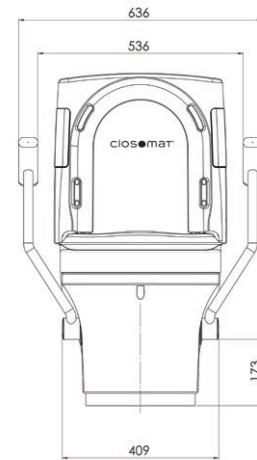
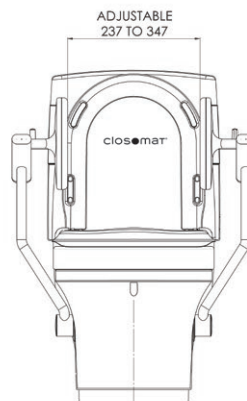
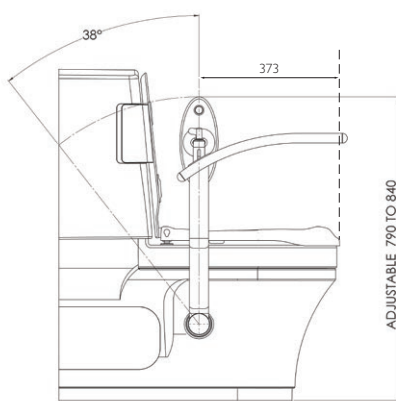


Soft Junior
Palma Seat (Blue)
Side & 3D views shown
with lid (White)

Soft Horseshoe
Palma Seat (Blue)
Side & 3D views shown
with lid (White)



Fold-down support arms



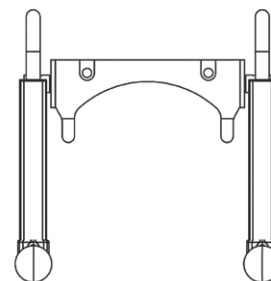
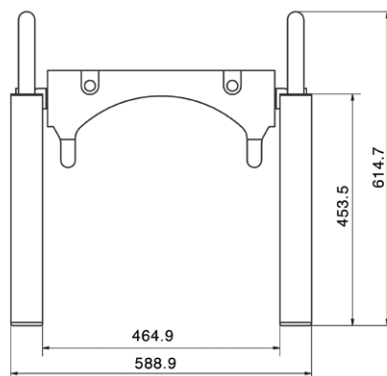
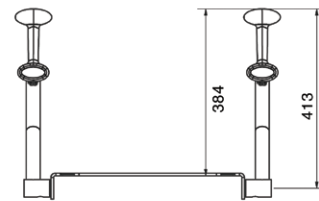
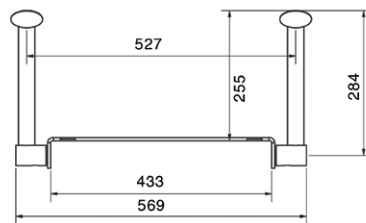
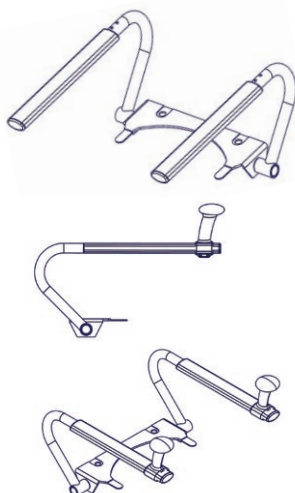
IMPORTANT NOTE:

SUPPORT ARMS MAY BE FITTED TO A CLOSMAT, FLOOR FIXING INTEGRITY IS ESSENTIAL FOR THE STABILITY OF UNITS.

SUPPORT FOOT:

LIMA VITA'S SUPPLIED WITH SUPPORT ARMS ARE ALSO SUPPLIED WITH AN ADJUSTABLE STAINLESS STEEL SUPPORT FOOT. IT IS ADVISED THAT THIS IS FITTED AND ADJUSTED TO ENSURE THE TOILETS' STABILITY.

Slimline version

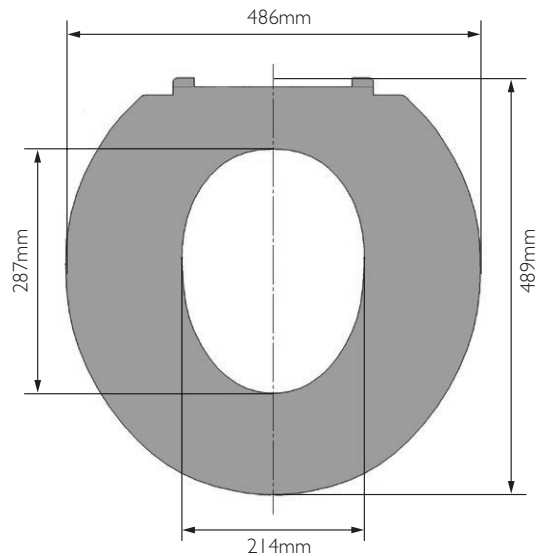


Footnote: Height from top of seat to top of arm = 207mm

Bariatric

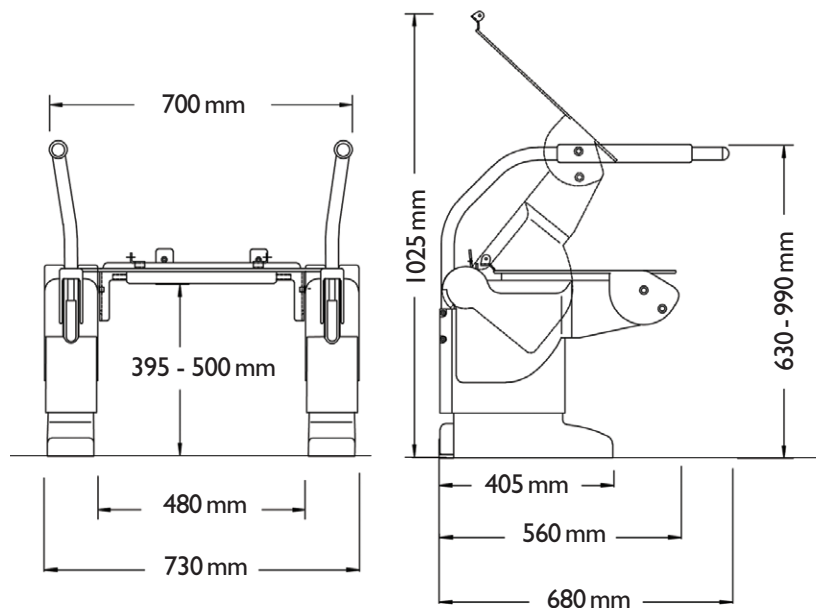
Bariatric Palma Vita

- Closomat bariatric Palma Vita featuring the Big John seat
- Safe working load: 362kg/57st
- Palma Vita with bariatric seat: 869mm high x 486mm wide x 750mm deep
- Seat depth: 60mm
- Floor to top of seat: 470mm



Aerolet bariatric

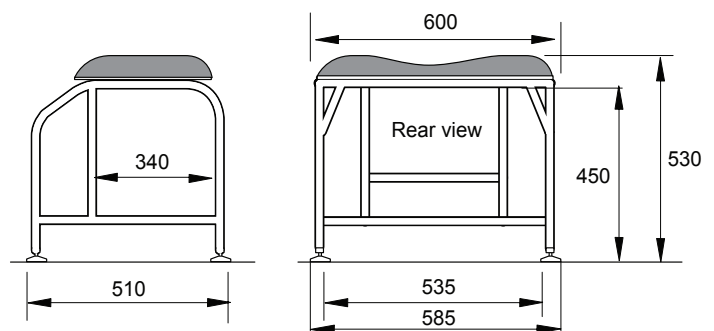
- Safe working load: 250kg/39st
- Big John toilet seat
- Palma Vita with Aerolet bariatric 1025mm high x 730mm wide x 750mm deep
- Seat depth: 60mm
- Floor to top of seat: 503-588mm



N.B. Only tilt version is available

Closomat bench

- Safe working load: 349kg/55st
- Overall dimensions: 530mm high x 600mm wide x 510mm deep



Benches to a higher capacity available on request

Paediatric support systems

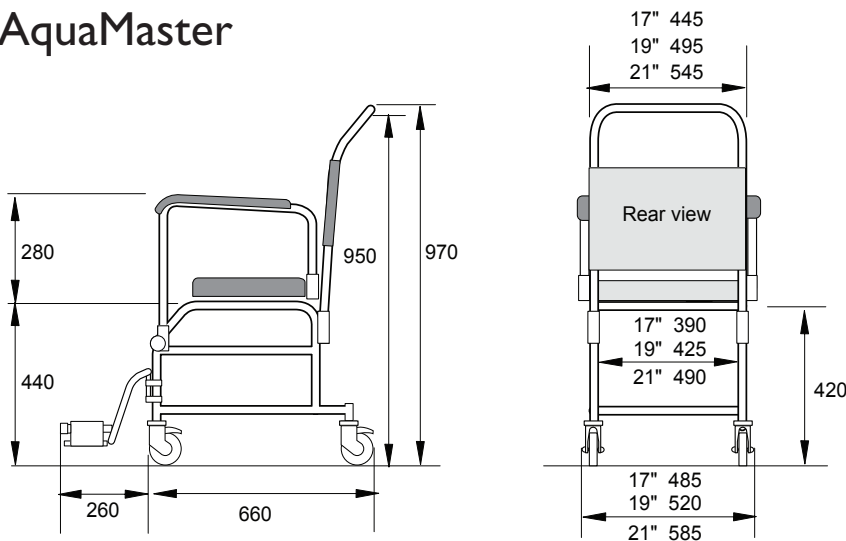
Rifton HTS hygiene & toileting system

- Compatible with Closomat Palma Vita (single extended douche)

	Units	Clip-on	Medium	Large
User Height	cms	106-142	106-142	127-188
Overall Width	cms	54	54	60
Seat (front) to Footboard Height	cms	25-38	25-38	33-46
Seat (front) to Floor: Mobile Tilt Frame	cms	38-55	38-55	43-57
Seat (front) to Floor: Mobile Non-Tilt Frame	cms	39-51	39-51	46-56
Seat (front) to Floor: Stationary Non-Tilt Frame	cms	32-43	32-43	38-48
Seat Depth	cms	29/32/34/37	29/32/34/37	37/39/42/44
Seat Width	cms	25/30/36	25/30/36	33/38/43
Armrest Height	cms	18	18	22
Backrest Height Above Seat	cms	50	50	62
Backrest Width	cms	34	34	41
Tilt-In-Space Prone	degrees	5°	5°	5°
Tilt-In-Space Recline	degrees	25°	25°	25°
Backrest Angle Adjustment	degrees	6° prone, 6° and 18° recline	6° prone, 6° and 18° recline	6° prone, 6° and 18° recline
Frame Weight	kg	–	13	20
Max. Clear Height Under Seat (Tilt Frame)	cms	–	48	51
Safe Working Load	kg	68	68	113

Shower chair support systems

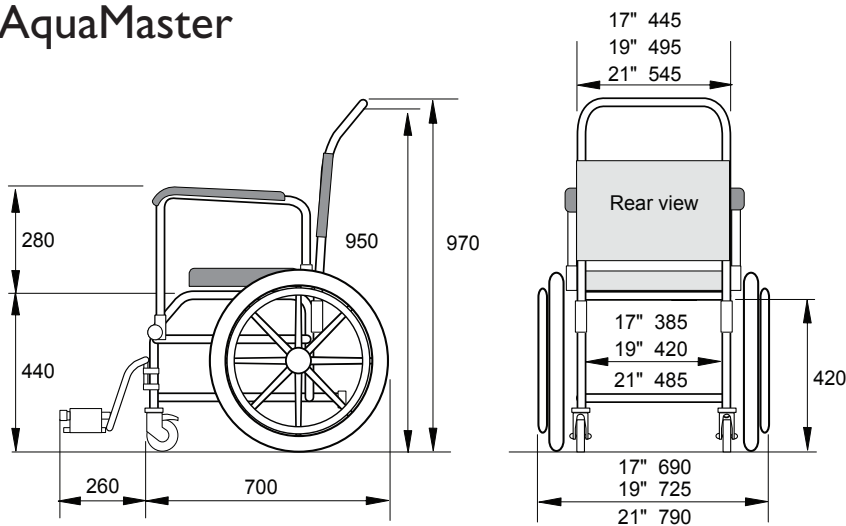
Chiltern AquaMaster A06C



- Height-adjustable from 440mm
- Safe working load: 200kg/31st

Dimensions	17"	19"	21"
Backrest width	445mm	495mm	545mm
Clearance inside frame	390mm	425mm	490mm
Overall width	485mm	520mm	585mm

Chiltern AquaMaster AIIC



- Height-adjustable from 440mm
- Safe working load: 200kg/31st

Dimensions	17"	19"	21"
Backrest width	445mm	495mm	545mm
Clearance inside frame	385mm	420mm	485mm
Overall width	690mm	725mm	790mm

Shower chair support systems

Prism T40 Auto

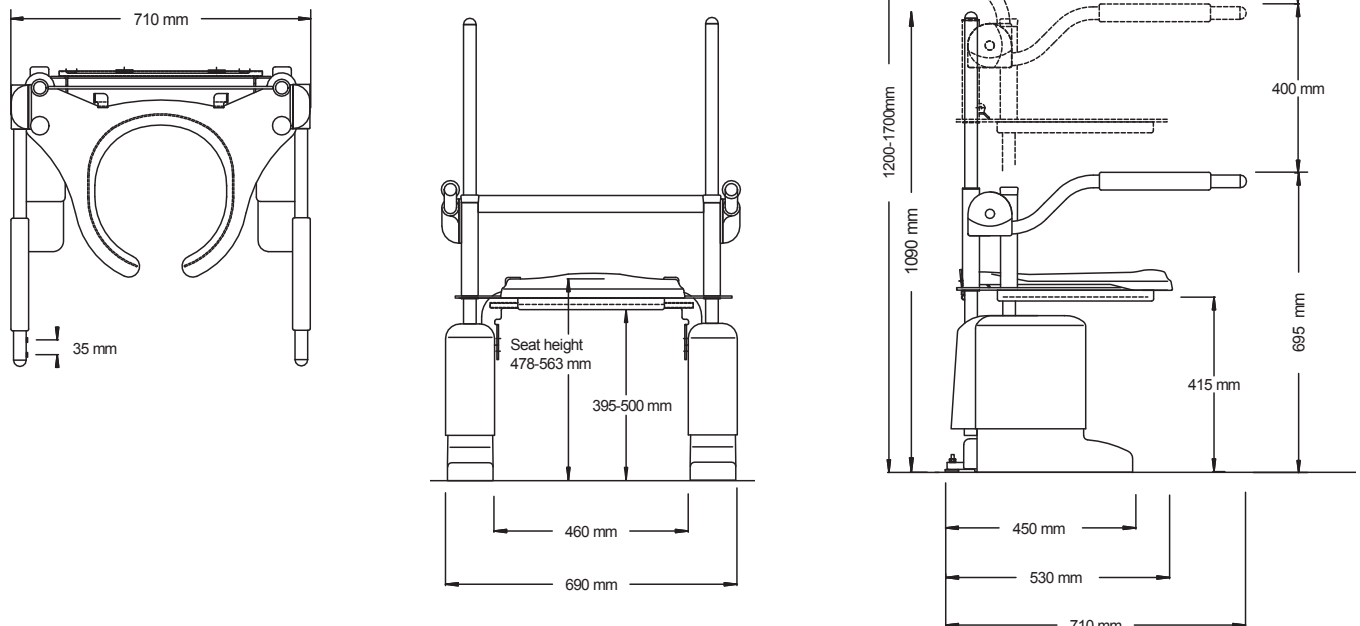
	A	B	C
Overall maximum height	1000mm	1000mm	1000mm
Overall maximum width	590mm	540mm	540mm
Length including footrests (if fitted) at lowest position	1050mm	1050mm	1050mm
Length including footrests (if fitted) at highest position	960mm	960mm	960mm
Width of standard seat	540mm	490mm	440mm
Height to top of seat	560mm	560mm	560mm
Height clearance	480mm	480mm	480mm
Seat depth (standard seat)	400mm	400mm	400mm
Top of armrest to top of seat	180mm	180mm	180mm
Width clearance	485mm	435mm	385mm
Top of backrest to seat	450mm	450mm	450mm
Distance between armrests at rear	460mm	410mm	410mm
Distance between armrests at front	530mm	480mm	430mm
Safe working load: 200kg/31st	–	–	–

Prism T70 Auto

	A	B	C
Overall maximum height	1000mm	1000mm	1000mm
Overall maximum width	790mm	740mm	690mm
Length including footrests (if fitted) at lowest position	1140mm	1140mm	1140mm
Length including footrests (if fitted) at highest position	1060mm	1060mm	1060mm
Width of standard seat	540mm	490mm	440mm
Height to top of seat	560mm	560mm	560mm
Height clearance	480mm	480mm	480mm
Seat depth (standard seat)	400mm	400mm	400mm
Top of armrest to top of seat	180mm	180mm	180mm
Width clearance	485mm	435mm	385mm
Top of backrest to seat	450mm	450mm	450mm
Distance between armrests at rear	460mm	410mm	410mm
Distance between armrests at front	530mm	480mm	430mm
Safe working load: 200kg/31st	–	–	–

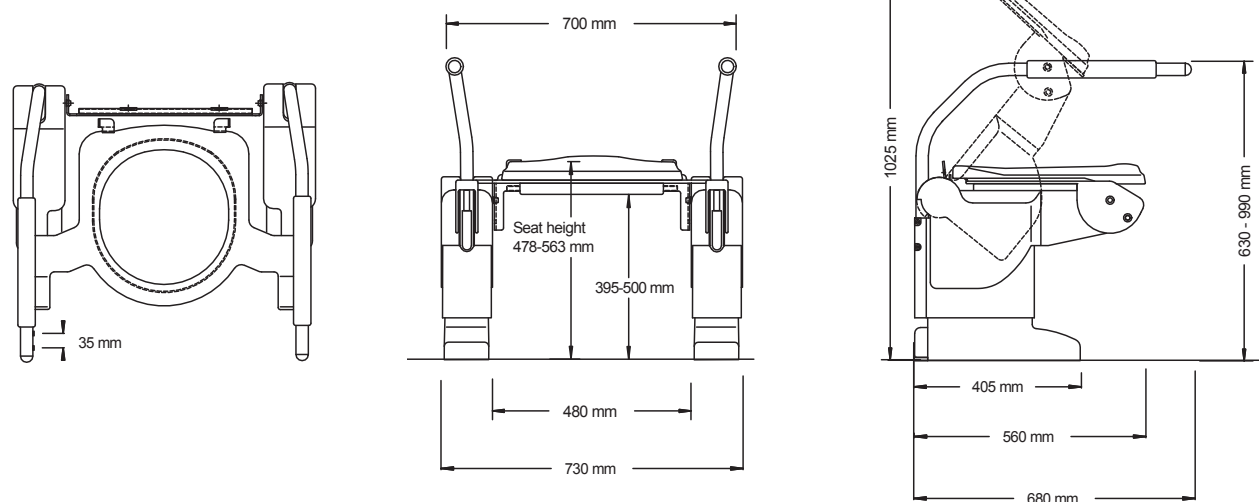
Aerolet planning data and service requirements

Aerolet Vertical Palma Vita compatible



- Safe working load: 150kg/24st
- Overall dimensions (Aerolet Vertical): 710mm wide x 710mm deep x 1700mm high

Aerolet Tilt Palma Vita compatible

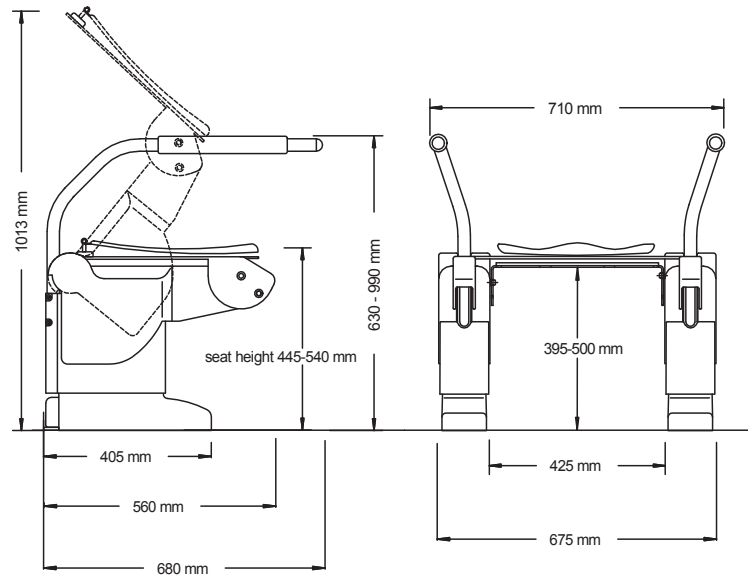


- Safe working load: 150kg/24st
- Overall dimensions (Aerolet Tilt): 730mm wide x 680mm deep x 1025mm high

Aerolet planning data and service requirements

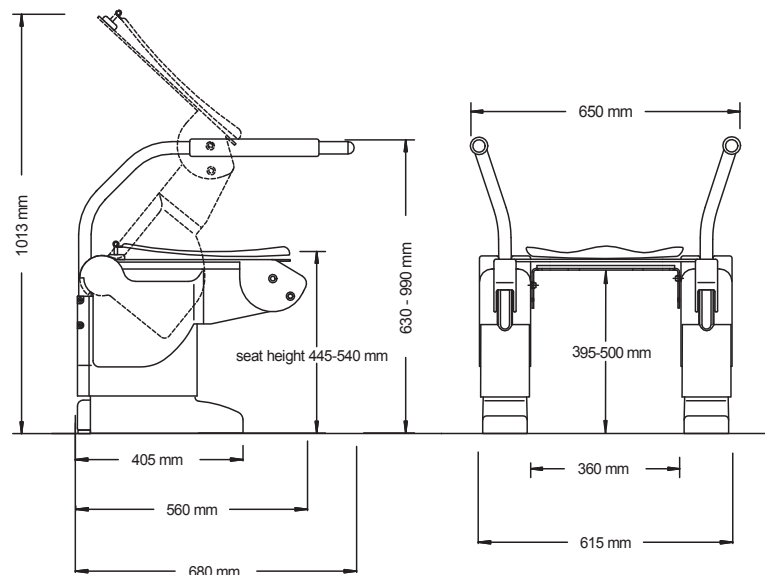
Aerolet Conventional

- Fits most existing bathrooms (width: 67.5cm, height from: 37cm)
- Can be adjusted to fit higher bowls (40cm up to 50cm)
- Can be adjusted to fit hanging bowls (minimum height: 37cm)
- Safe working load: 150kg/24st
- Overall dimensions: 710mm wide x 680mm deep x 1013mm high

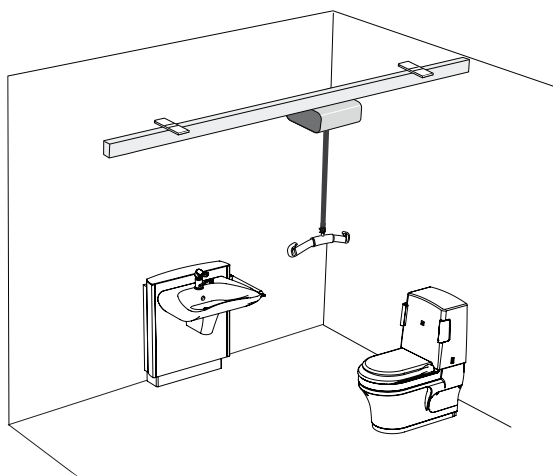


Aerolet Small

- Fits every existing bathroom (width: 61.5cm, height: 40cm)
- Can be adjusted to fit higher bowls (40cm up to 50cm)
- Can be adjusted to fit hanging bowls (minimum height: 37cm)
- Safe working load: 150kg/24st
- Overall dimensions: 650mm wide x 680mm deep x 1013mm high



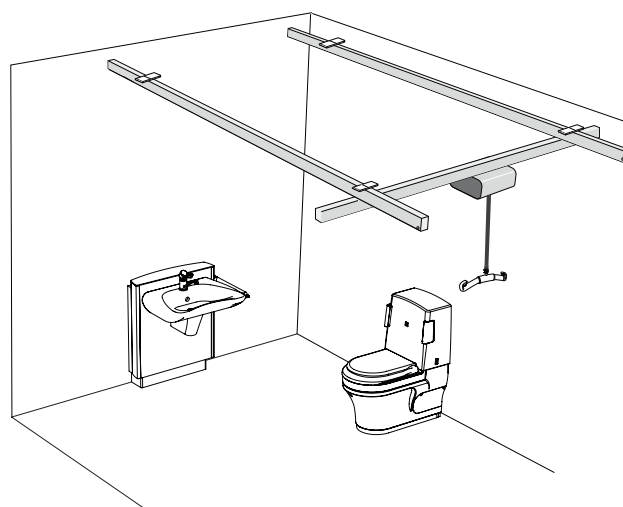
Ceiling track hoists



Straight (Single) track system

Ceiling Track Hoists can be fitted to almost all locations.
To accommodate this flexible approach there are 3 options available for fitting:

- Ceiling mounted
- Wall brackets
- Gantry legs

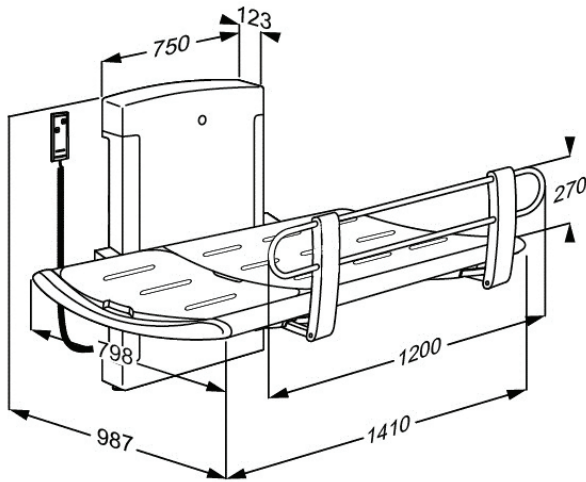


H-track system

Hoist motor	24V DC
Traverse motor	24V DC
+ System traverse motor	24V DC
Weight unladen hoist (powered)	22.3 kg
Weight unladen hoist (manual)	21.9 kg
Weight of carrybar	2 kg
Shipping box dimensions	510mm x 500mm x 500mm
Shipping box weight (powered)	31 kg
Shipping box weight (manual)	28 kg
Voltage	24V DC
Fuse rating	3amp max.
Batteries	2 off 12V 7amp sealed – rechargeable
Transformer input	240V A.C. 50Hz
Transformer output	33V A.C.
Approximate charging time	4 hours

• Safe working load: 200kg/31st

Height-adjustable changing bench



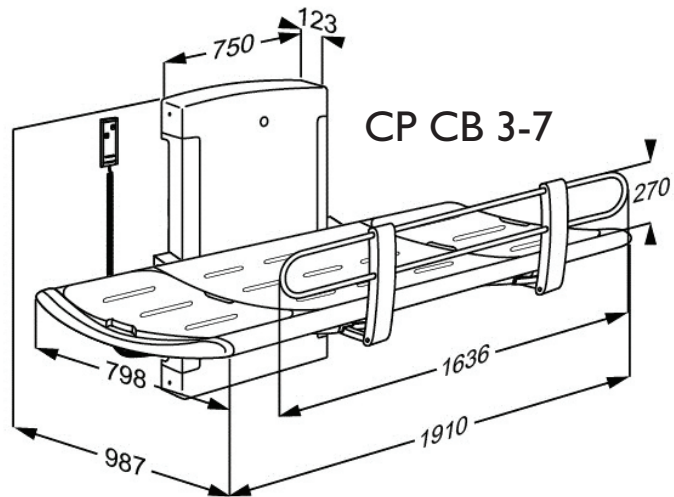
CP CB 3-6

Electrically operated 1300mm, complete with safety rail.
 The water collection tray is equipped with an integrated water outlet that prevents water from splashing on carers or the floor. The flexible hose can be connected to either an outlet in the floor or on the wall. The integrated gas cylinder enables the bench to be folded easily against the wall when not in use to maximise floor space. Height-adjustable 700 mm. The safety rail can be folded easily up or down using only one hand. Aluminium, polyurethane foam, plastics, powder-lacquered steel. Maximum load: 200 kg

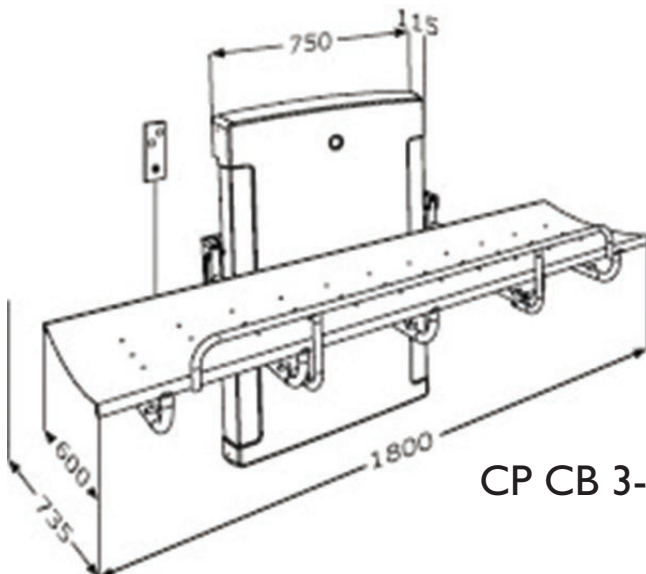
- Safe working load: 200kg/31st

Electrically operated 1800mm, complete with safety rail.
 The water collection tray is equipped with an integrated water outlet that prevents water from splashing on carers or the floor. The flexible hose can be connected to either an outlet in the floor or on the wall. The integrated gas cylinder enables the bench to be folded easily against the wall when not in use to maximise floor space. Height-adjustable 700 mm. The safety rail can be folded easily up or down using only one hand. Aluminium, polyurethane foam, plastics, powder-lacquered steel. Maximum load: 200 kg

- Safe working load: 200kg/31st



CP CB 3-7



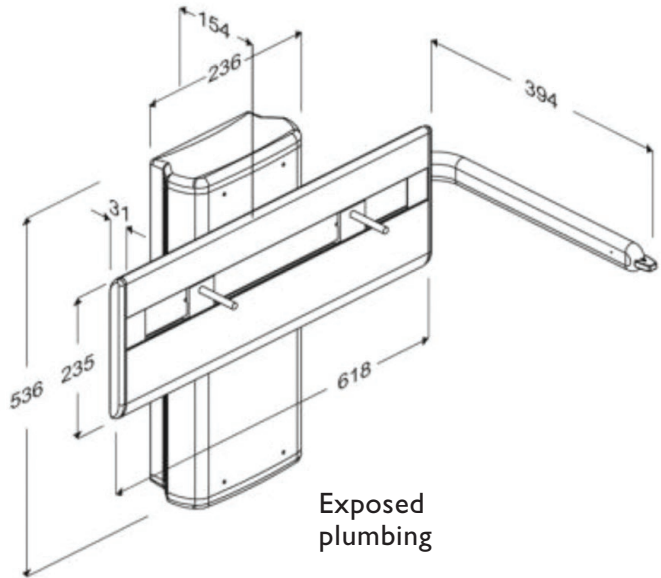
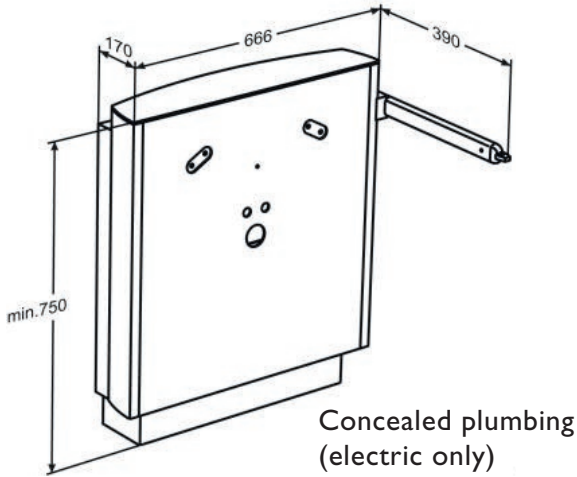
CP CB 3-8

Electrically operated 1800mm, complete with safety rail.
 1800 mm powered nursing bench with wired hand control, 700mm height-adjustable. Incl. safety rail and water collection tray with integrated outlet that prevents water from splashing on carers or the floor. The flexible hose can be connected to either an outlet in the floor or on the wall. The integrated gas cylinder enables the bench to be folded easily against the wall when not in use to maximise floor space. Materials: Coated steel, mesh cover. The safety rail can be folded easily up or down using only one hand. Frame: Powder-lacquered stainless steel Cover: Carfix. Maximum load: 150 kg

- Safe working load: 150kg/24st

Hand wash basin

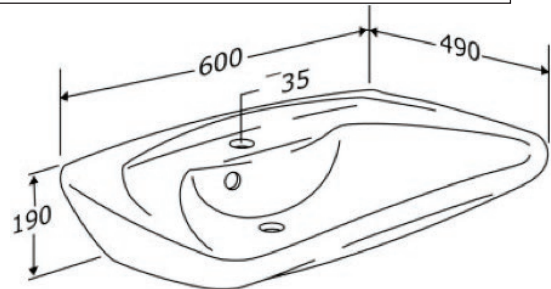
Brackets (electric or gas)



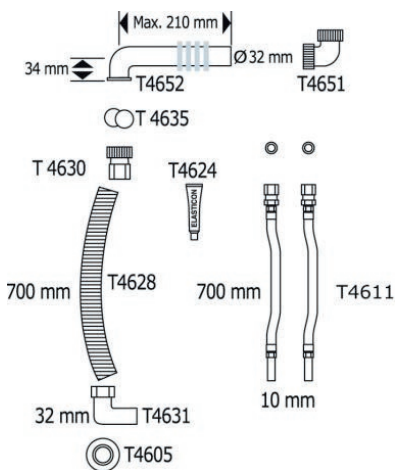
Powered wash basin lifter, 300 mm height-adjustable with lever control. The lever control is mounted at the end of a fixed rail which can provide support and function as a towel rail. The wash basin can be moved up and down by means of the lever control alone. A wired hand control can also be specified.

Basin

The concave front edge stabilises a standing as well as a seated user. The rounded shapes are nice to grip and lean against. The design of the corners leaves space and supports the elbows in the basin and the flat bottom leaves space for the legs of a seated user. Ceramic



Feed & waste systems

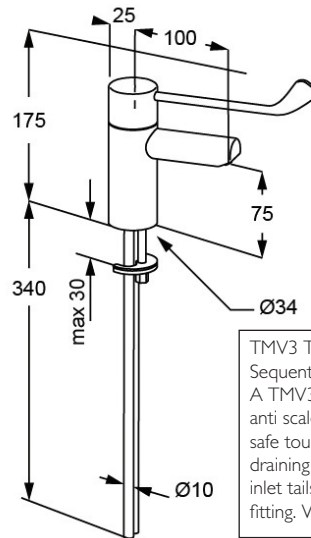


Flexible feed/waste system. Available in the following sizes:
500mm/700mm
700mm/700mm
700mm/900mm
1200mm/1500mm

Flexible feed/waste system for the UK. Feed pipes: 700 mm, waste pipe: 700 mm. Feed pipe, metal braid, with 1/2" coupling. Flexible waste pipe, dia. 32 mm.

• Safe working load: 100kg/15st

Tap

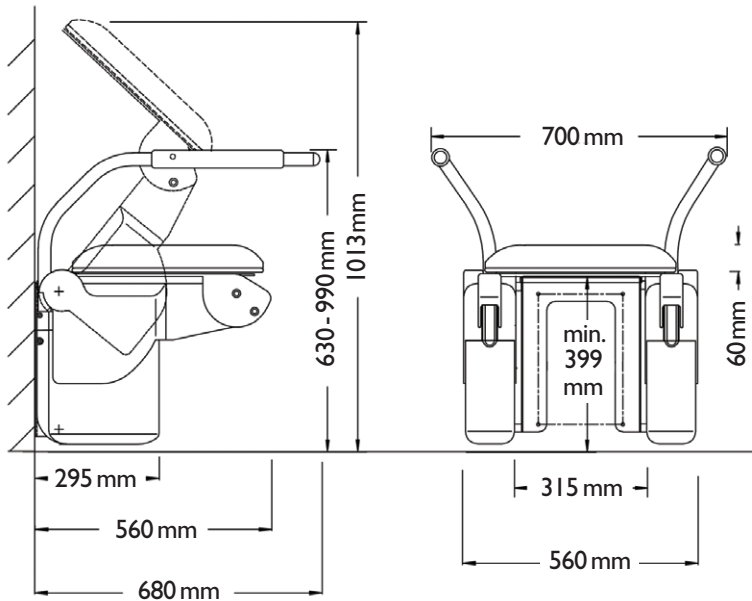


TMV3 Thermostatic Sequential lever Mixer tap
A TMV3 tap featuring anti scald technology, a safe touch body and a self draining spout. With copper inlet tails. Without drain fitting. WRAS approved

More information on Hand Wash Basins is available on our website: www.closomat.co.uk

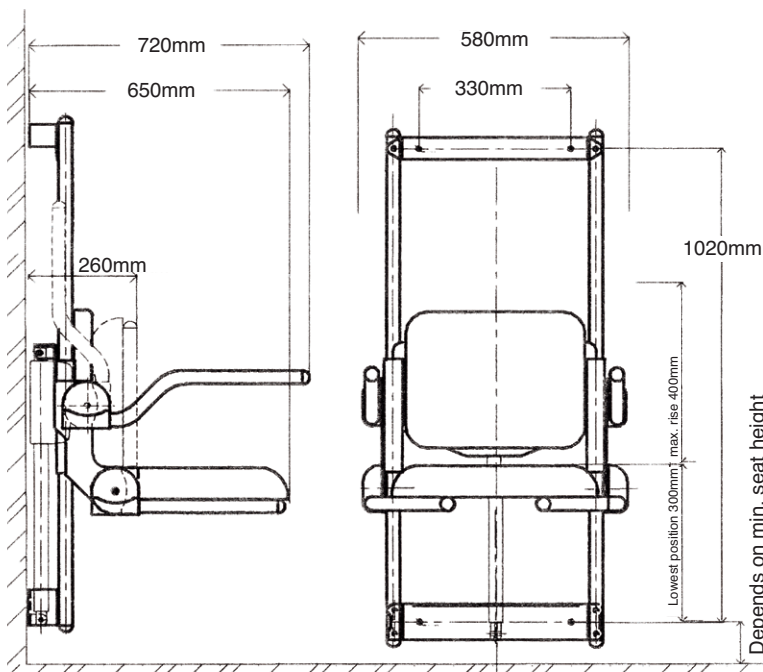
Shower

Aerolet tilting shower seat



- Safe working load: 150kg/24st

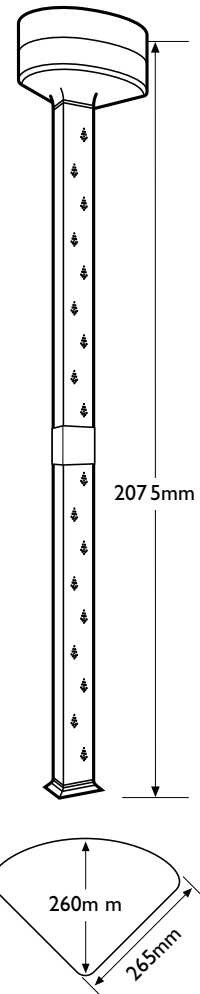
Aerolet vertical shower lift



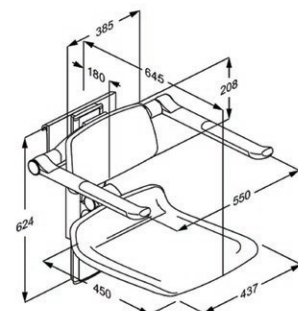
- Safe working load: 190kg/30st

Power supply via control box mounted in accordance with part P.

Après body dryer



Height-adjustable shower seat



- Safe working load: 150kg/24st

Notes:

Notes:



CLOSOMAT

Building I, Brooklands Place
Brooklands Road
Sale
Cheshire
M33 3SD

info@clos-o-mat.com
www.closomat.co.uk

Telephone contacts

Sales and service
0800 374 076

We reserve the right to make modifications as a result of ongoing adjustments and further development. This factor, and the variety of equipment options available, may result in descriptions not corresponding to the current equipment version in all details.

CLOSOMAT® has been the protected trademark of the world's first wash & dry (shower) toilet since 1957.